



Escape from Isolation



Rogaine

**Celebrating
40 years of
Rogaining
in Western
Australia**



Setters & Veters

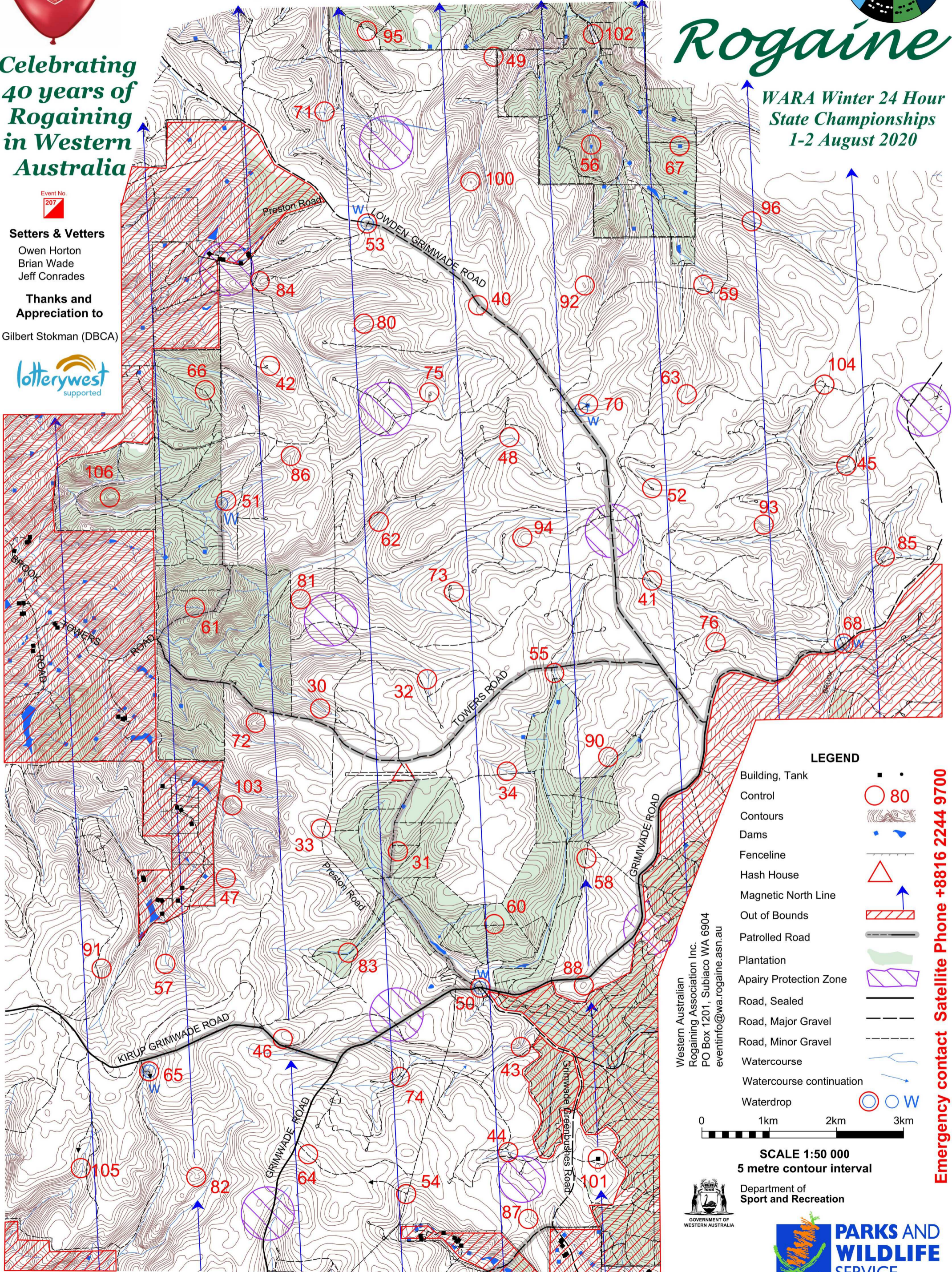
Owen Horton
Brian Wade
Jeff Conrades

**Thanks and
Appreciation to**

Gilbert Stokman (DBCA)

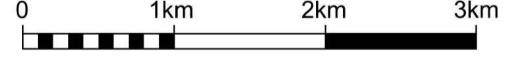


**WARA Winter 24 Hour
State Championships
1-2 August 2020**



LEGEND

- Building, Tank
- Control
- Contours
- Dams
- Fenceline
- Hash House
- Magnetic North Line
- Out of Bounds
- Patrolled Road
- Plantation
- Apairy Protection Zone
- Road, Sealed
- Road, Major Gravel
- Road, Minor Gravel
- Watercourse
- Watercourse continuation
- Waterdrop



SCALE 1:50 000
5 metre contour interval



Department of
Sport and Recreation



This map was produced using OOMAPPER 0.9.3 by the Western Australian Rogaining Association, wa.rogaine.asn.au. Data supplied by DOLA and used under copy licence 393/93. Possession of this map does not give right of entry to this area.

Emergency contact Satellite Phone +8816 2244 9700

Western Australian
Rogaining Association Inc.
PO Box 1201, Subiaco WA 6904
eventinfo@wa.rogaine.asn.au

THE ESCAPE FROM ISOLATION ROGAINE

2020 STATE CHAMPIONSHIPS

WARA Winter 24 Hour Rogaine 1 August - 2 August 2020

No.	Description	Points	No.	Description	Points	Important Information
30	The watercourse	30	70	The dam, north side (Water)	70	Control Cards From 1130 Saturday
31	The spur, broad	30	71	The watercourse junction	70	
32	The watercourse	30	72	The spur	70	Briefing 1145 Saturday
33	The gully, broad	30	73	The spur, broad	70	
34	The watercourse	30	74	The watercourse	70	Start 1200 Saturday
			75	The turning circle	70	
40	The road bend, 60 m @ 230 deg	40	76	The gully, broad	70	Finish 1200 Sunday
41	The track intersection	40	80	The knoll, broad	80	
42	The knoll, broad	40	81	The gully	80	Hash House Opens 1600 Saturday Closes 1300 Sunday
43	The watercourse	40	82	The knoll	80	
44	The track watercourse intersection	40	83	The watercourse junction	80	Sunset 1737 Saturday
45	The watercourse	40	84	The knoll	80	
46	The knoll, broad, south side	40	85	The watercourse	80	Sunrise 0707 Sunday
47	The watercourse	40	86	The gully	80	
48	The watercourse	40	87	The gully, broad	80	Moonrise 1513 Saturday
49	The saddle	40	88	The knoll, broad	80	
50	The road intersection, 40 m @ 310 deg (Water)	50	90	The gully, broad	90	Moonset 0603 Sunday
51	The watercourse (Water)	50	91	The gully	90	
52	The turning circle	50	92	The knoll, broad	90	Controls Used 64
53	The southern road/track intersection, 50 m @ 150 deg (Water)	50	93	The spur, broad, south side	90	
54	The track intersection	50	94	The spur, broad	90	Total Points 4130
55	The watercourse	50	95	The spur	90	
56	The dam, north side	50	96	The watercourse	90	Patrolled Roads (Marked in grey on map) Kirup-Grimwade Road Lowden Grimwade Road Grimwade Road Towers Road
57	The watercourse	50	100	The knoll	100	
58	A big tree stump, 50 m @ 100 deg	50	101	The old fire tower	100	
59	The watercourse	50	102	The watercourse	100	
60	The gully	60	103	The southern spur	100	
61	The watercourse	60	104	The track junction	100	
62	The watercourse	60	105	The watercourse	100	
63	The gully	60	106	The knoll	100	
64	The track	60				
65	The watercourse (Water)	60				
66	The knoll	60				
67	The dam, SE corner	60				
68	The north eastern track intersection, 50 m @ 20 deg (Water)	60				